

## SERIES 1100 GLOBE SINGLE SEATED 2-WAY VALVE

- Precision Control is its forte.
- It is excellent in handling clean fluids, Gases and Steam.
- Noise abating Trim designs available.
- It satisfies the majority of applications except very high flow rates.
- Sizes : 15 NB thru 750 NB
- Rating: ANSI 150 thru ANSI 1500#  
(Higher ratings not applicable to all sizes)



Series 1100 Globe Single Seated 2-way Valve



## SERIES 2000 GLOBE DOUBLE SEATED 2-WAY VALVE

- The trim is inherently pressure balanced
- It very well handles unclean fluids, Gases and Steam
- Low noise trims are also available
- Preferred in refineries and industries wherever the fluid contains sediments, Solid particles and also precision is equally important
- Sizes : 40 NB thru 1500 NB
- Rating: ANSI 150 thru ANSI 900#  
(Higher ratings available on request)

Series FV 2000  
Globe Double Seated 2-way Valve

## SERIES 5000 GLOBE ANGLE VALVE

- It is most suitable for Severe, Abrasive, Erosive, Slurry applications. However, needs application engineering on case-to-case basis
- Handles flashing the best
- Sizes: 25 NB thru 900 NB
- Rating: ANSI 150 thru ANSI 900#  
(Higher ratings available on request)
- Higher Size available in fabricated economical version also



Series 5000 Globe Angle Valve



## SERIES 1500-MH GLOBE METAL HOUSED TEFLON VALVE

- Globe Metal Housed Teflon Valves are "Cost Effective" and excellent in handling highly corrosive Fluids, Acids
- The valve design is proven
- Higher PTFE Valve thickness as 6mm minimum
- Maximum pressure 10 Bar
- Maximum temperature: 180<sup>0</sup> C
- Sizes: 15 NB thru 80 NB
- Rating: ANSI 150#

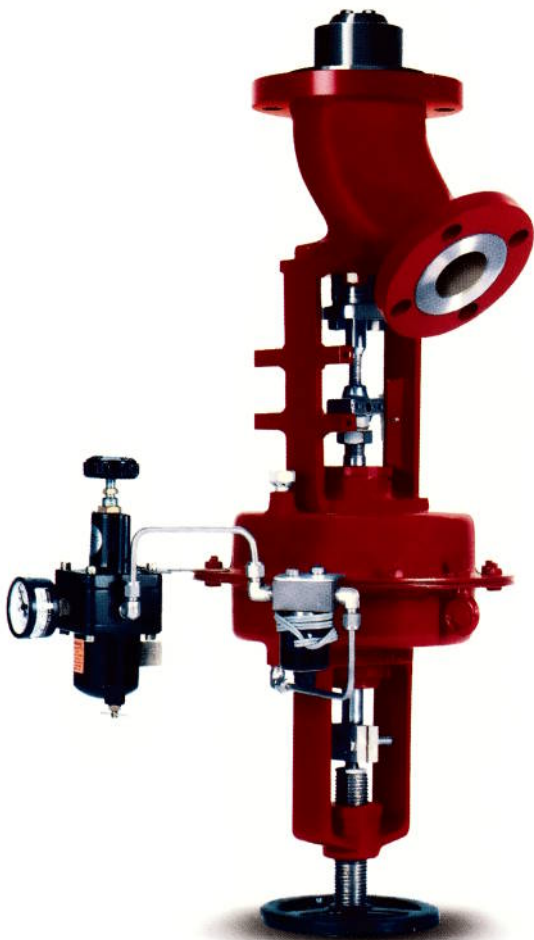
Series 1500-MH Globe Metal Housed Teflon Valve

## SERIES 3000 GLOBE 3 WAY VALVE

- When one wants to split the fluid in TWO DIFFERENT directions or mix TWO DIFFERENT streams of fluids to achieve desired control. This valve can satisfy the application
- Both the characteristics i.e: Linear / ON OFF are available
- Sizes: 15 NB to 750 NB
- Rating: ANSI 150 to ANSI 900#  
(Higher ratings available on request)



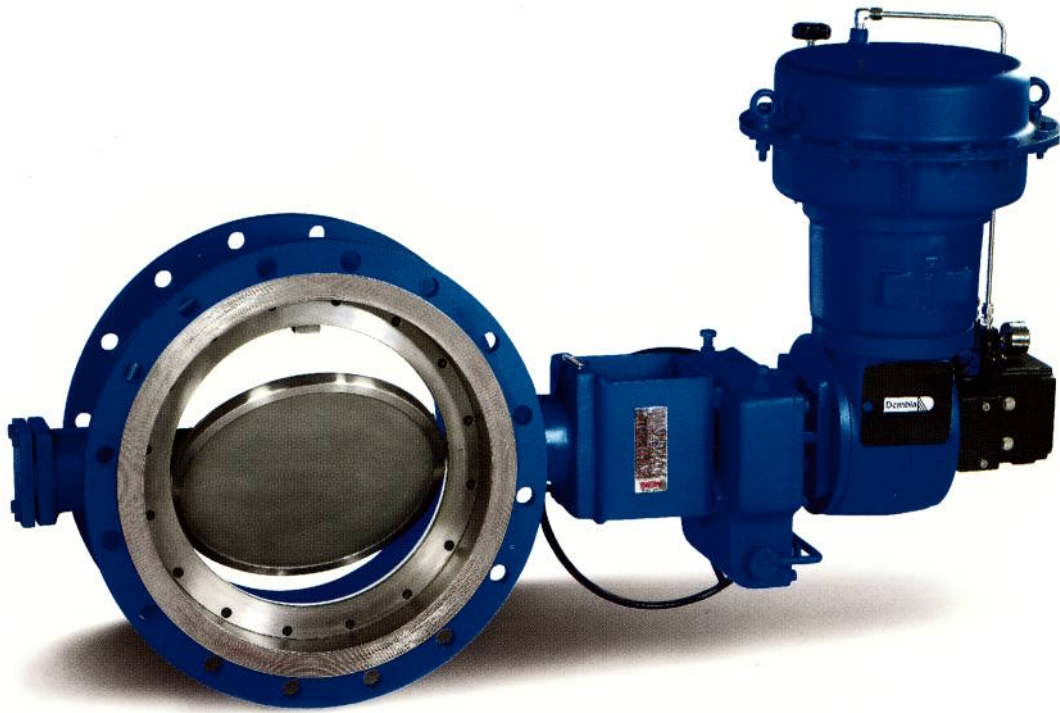
Series 3000 Globe 3 Way Valves



## SERIES 9000 FLUSH BOTTOM VALVE

- Flush Bottom Valves are most popular in Pharma and Agrochemical Batch Process Industries for emptying the vessel from bottom
- Effective in handling Highly Dense and Viscous Fluids & Slurry
- Tight shut-off up to 200° C
- Jacketed bodies are also available to maintain the liquid in flowing state
- Sizes: 40 NB thru 300 NB
- Rating: ANSI 150 thru ANSI 300#  
(Higher ratings available on request)

Series 9000 Flush Bottom Valve



Series 7400 High Performance Butterfly Valve

## SERIES 7400 HIGH PERFORMANCE BUTTERFLY VALVE

- Double Eccentric Disc design impart extremely high Edge to suit various demanding applications
- Valves designed to achieve bi-directional tight shut off for sizes upto 3000 NB ( with Elastomer soft seat)
- Wide choice of various seat moc: EPDM / VITON / PTFE / RTFE (GFT) / SS316
- Choices of End Connections Wafer / Lugged / Flanged
- Face to face dimensions available as per International standards
- Fire safe design as per API 607 available
- Blow out proof stem design
- Size 50NB thru 3000 NB
- Valve ratings PN-1, PN-2.5, PN-6, PN-10, PN-16, PN-25, PN-40/ ANSI 150# / 300# ( ANSI 600# available on request)



Series 7400 Aluminium Bronze

## SERIES 7600 TRIPLE OFFSET BUTTERFLY VALVES

- Metal to metal Tight shut-off
- Inherently Fire Safe Design
- Laminated Seats
- Suitable to handle high temperature and abrasive application
- Bidirectional
- Sizes 3" through 48"
- Rating ANSI 150# , 300# & 600#

### Valve Operators:

- Lever
- Gear Box
- Pneumatic Actuator
- Electric Actuator
- Hydraulic Actuator

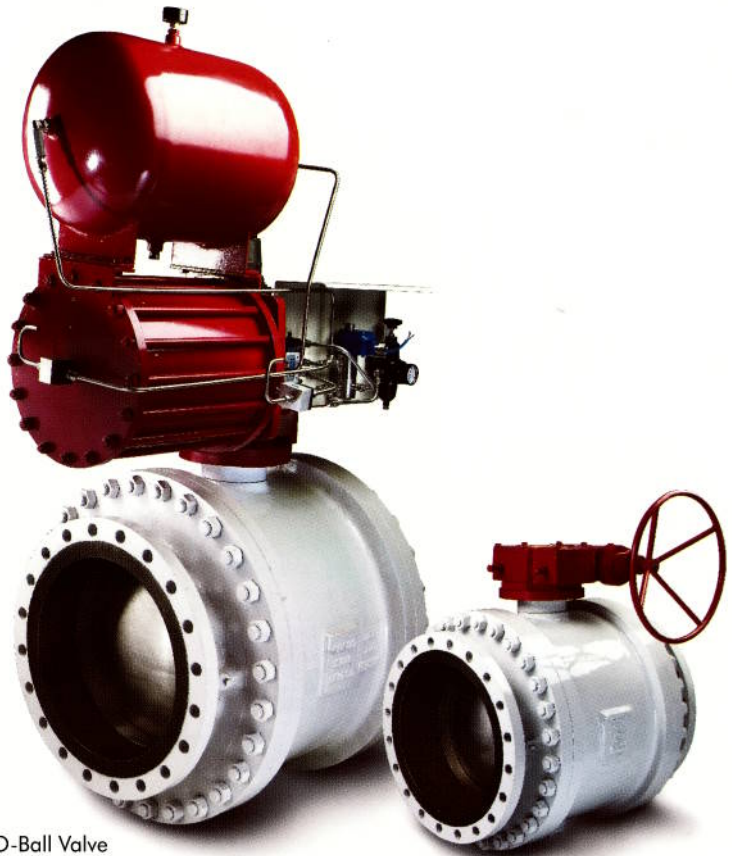


Series 7600 Triple Offset Butterfly Valves.



## SERIES FO 8200 O-BALL VALVE

- O-Ball valve is reliable valve for Isolation and emergency shut down conditions
- Also available in Manual operations
- Highest popular among automated valves
- Trunion Mounted design
- Sizes: 15 NB thru 1200 NB
- Rating: ANSI 150# to ANSI 2500#



Series FO 8200 O-Ball Valve



## SERIES FV 8200 V-BALL VALVE

- V-Ball Valve comfortably handles pulp, slurry, fibrous and viscous fluids
- While in MOTION It creates "WEDGING & SHEARING EFFECT"
- It has high flow capacity compared to globe valves and are used for precise control applications
- It can be used for shut off applications on case-to-case basis
- End Connections : flangeless and flanged are available
- Sizes: 25 NB thru 600 NB  
Rating: ANSI 150# To 600# (Not all Size)

Series FV 8200 V-Ball Valve